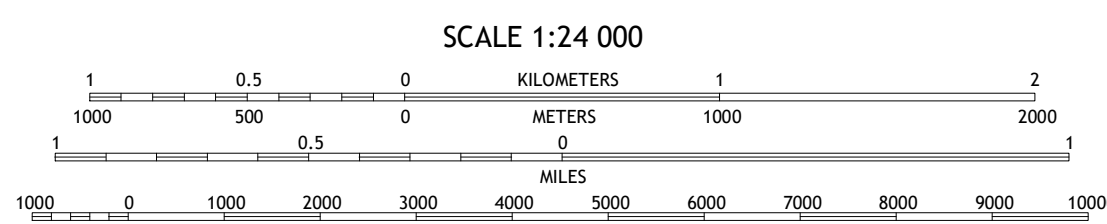
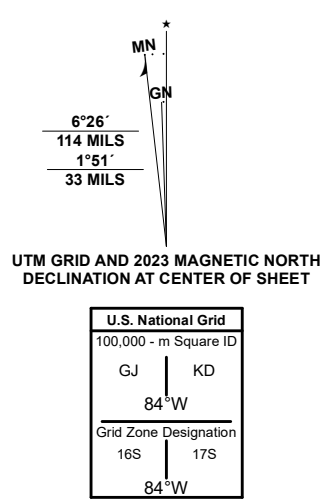




Produced by the United States Geological Survey

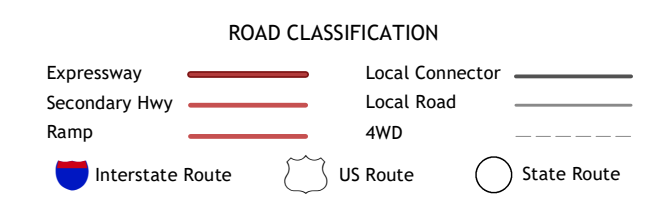
North American Datum of 1983 (NAD83)
World Geodetic System of 1984 (WGS84). Projection and
1 000-meter grid/Universal Transverse Mercator, Zone 16S17S
This map is not a legal document. Boundaries may be
generalized for this map scale. Private lands within government
reservations may not be shown. Obtain permission before
entering private lands.

Imagery.....NAIP, June 2017 - December 2017
Roads.....U.S. Census Bureau, 2016
Names.....GNIS, 1979 - 2023
Hydrography.....National Hydrography Dataset, 2000 - 2022
Contours.....National Elevation Dataset, 2019
Boundaries.....Multiple sources; see metadata file 2021 - 2022
Wetlands.....FWS National Wetlands Inventory 2004 - 2007



1	2	3
4	5	6
7	8	

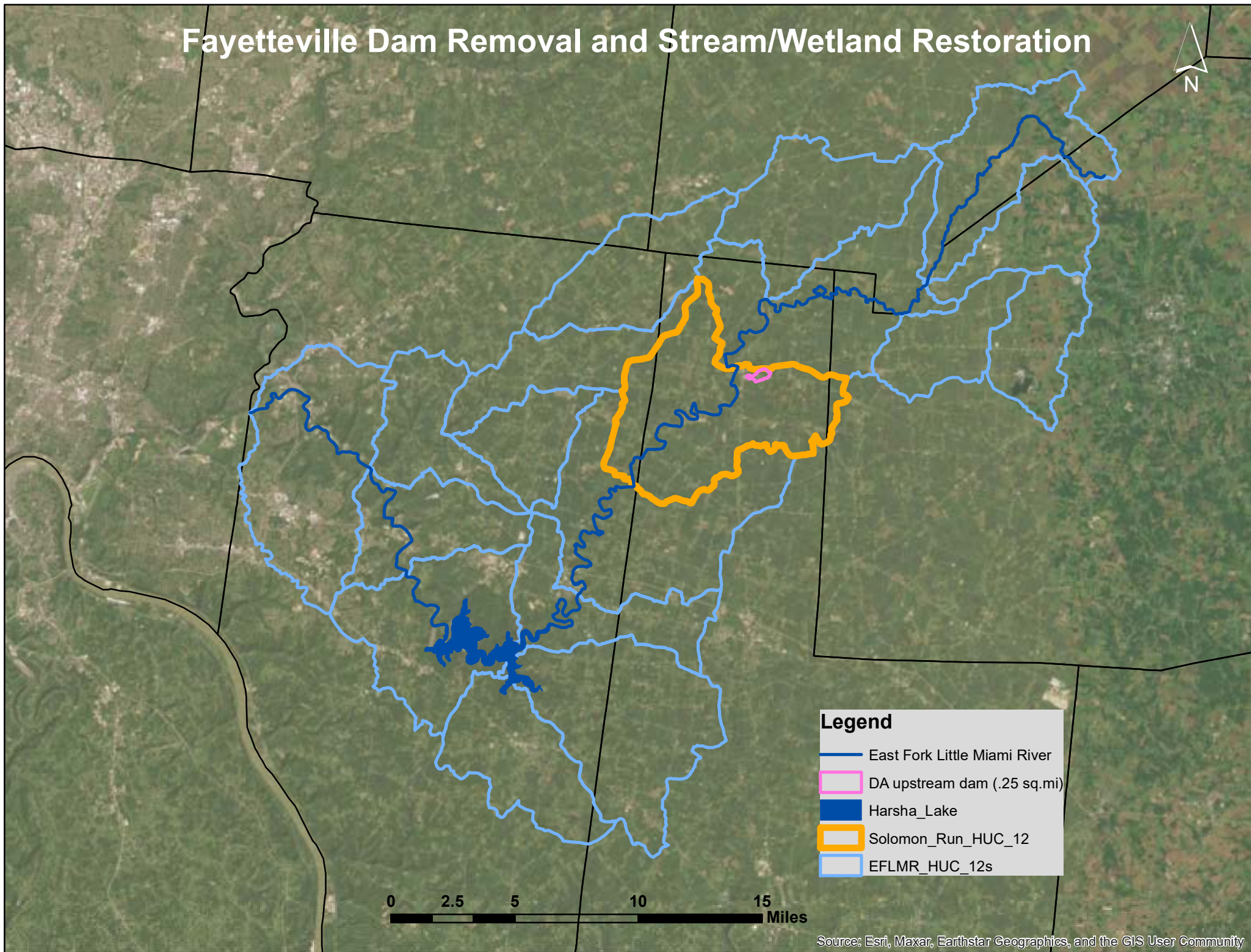
ADJOINING QUADRANGLES



1 Pleasant Plain
2 Blanchester
3 Martinsville
4 Newonsville
5 Lynchburg
6 Williamsburg
7 Mount Orab
8 Sardisla



Fayetteville Dam Removal and Stream/Wetland Restoration



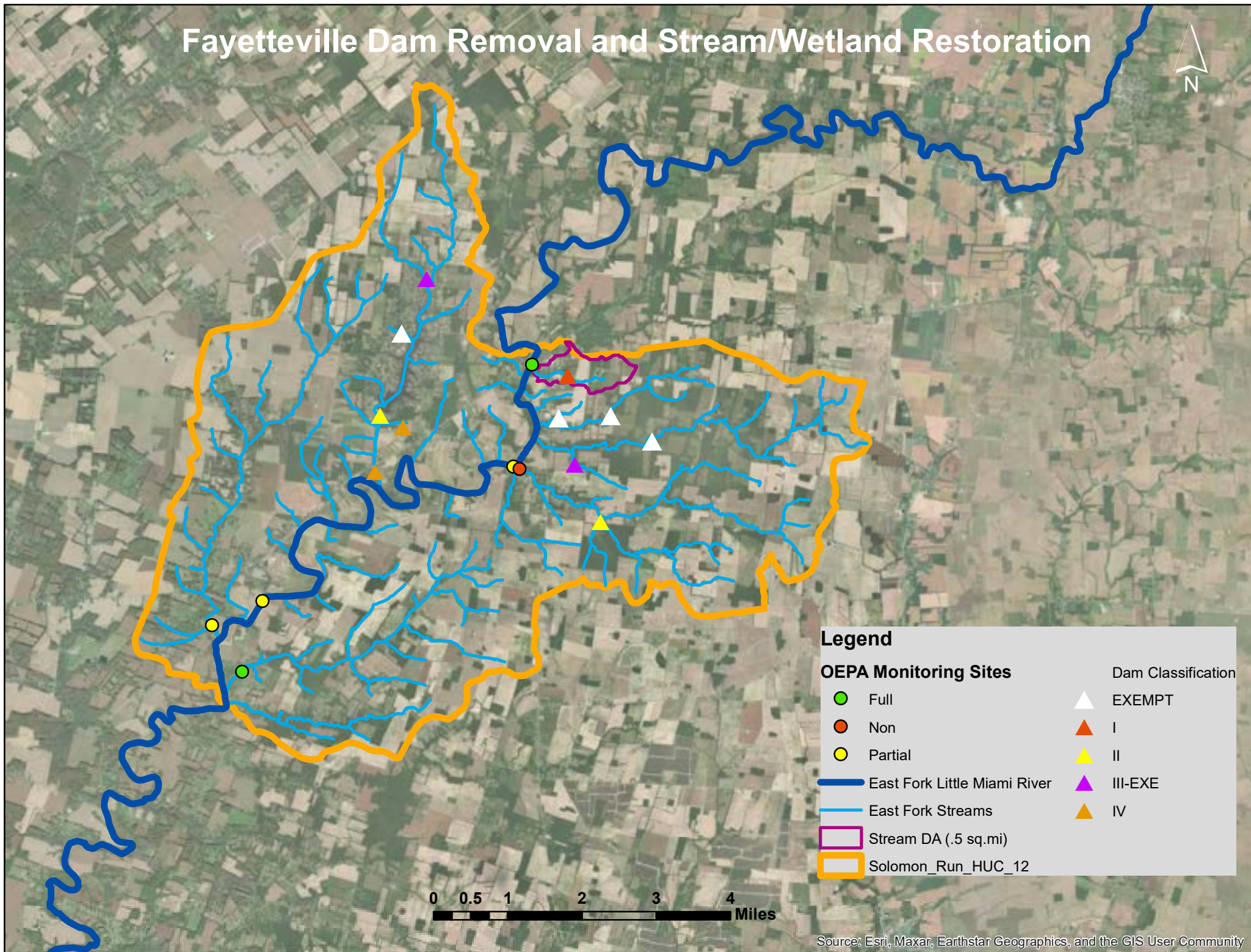
Legend

- East Fork Little Miami River
- DA upstream dam (.25 sq.mi)
- Harsha_Lake
- Solomon_Run_HUC_12
- EFLMR_HUC_12s



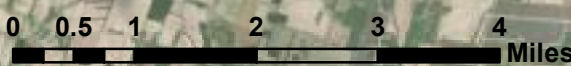
Source: Esri, Maxar, Earthstar Geographics, and the GIS User Community

Fayetteville Dam Removal and Stream/Wetland Restoration



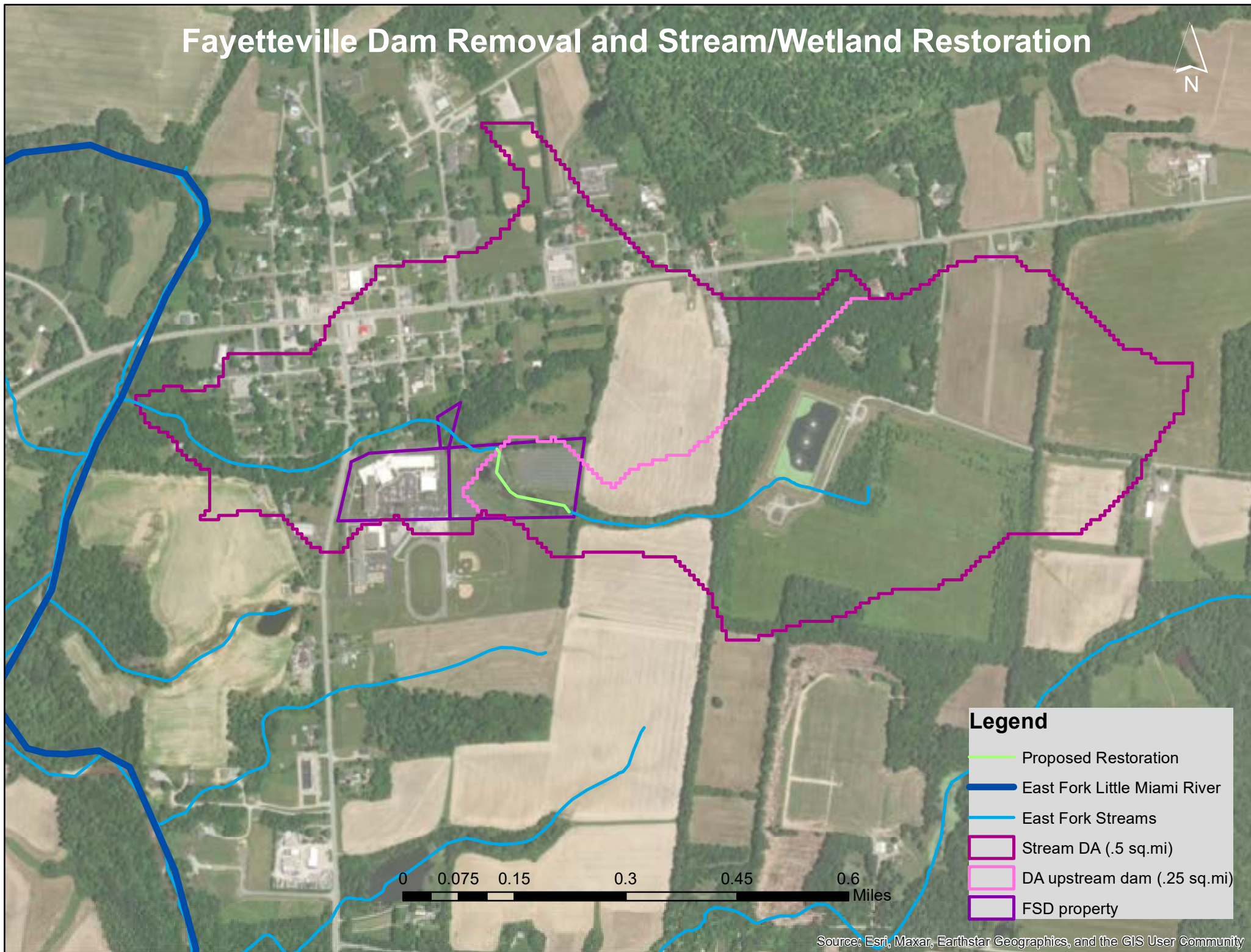
Legend

OEPA Monitoring Sites		Dam Classification
Full		EXEMPT
Non		I
Partial		II
East Fork Little Miami River		III-EXE
East Fork Streams		IV
Stream DA (.5 sq.mi)		
Solomon_Run_HUC_12		



Source: Esri, Maxar, Earthstar Geographics, and the GIS User Community

Fayetteville Dam Removal and Stream/Wetland Restoration



Legend

- Proposed Restoration
- East Fork Little Miami River
- East Fork Streams
- Stream DA (.5 sq.mi)
- DA upstream dam (.25 sq.mi)
- FSD property

0 0.075 0.15 0.3 0.45 0.6 Miles



38

BBY-5-98

RESTRICTED

1938 Aerial

Channelized Stream Pre-Dam Construction

1

0-29-65

BBY- 2FF-252

1965 Aerial Post Dam Construction



